

Field Report

This report consists of satellite results of one of your fields. Automated satellite Monitoring Service allows you to monitor multiple farming fields using latest satellite imagery.



Report Generation Date:
2025-03-09



Satellite imagery capture Date:
2025-3-8

Field Details



Field Address:
AQ-1A-12



Field Area:
126869 sq m (approx.)



Field Location:
Latitude:39.697
Longitude:48.848

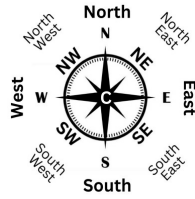
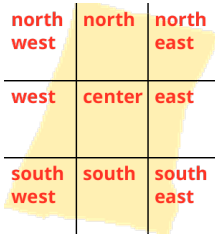
SERIAL NO.	TITLE	PAGE NO.
1	Understand the data for better farming	2
2	Weather Statistics for imagery capture data	3
	Weather Forecast for 7 days	
	Weather Graphs (for past 5 days)	4
3	Radar (RVI, RSM)	5
	RVI (Radar Vegetation Index)	
	RSM (Radar Soil Moisture)	
4	Crop Health (NDVI, EVI, SAVI, NDRE)	6
	NDVI (Normalized Difference Vegetation Index)	
	EVI (Enhanced Vegetation Index)	7
	SAVI (Soil Adjusted Vegetation Index)	8
	NDRE (Normalized Difference Red Edge)	9
5	Irrigation (NDWI, NDMI, Evapotranspiration)	10
	NDWI (Normalized Difference Water Index)	
	NDMI (Normalized Difference Moisture Index)	11
	Evapotranspiration	12
6	Soil Health (SOC)	12
7	RGB Satellite Image	13
8	Basic Analysis for Colorblind Visualization	13

Understand the data for better farming

ETCI



Field Directions



NDVI (For Crop Health)



Crop is in good condition



NDWI Image (For Irrigation)

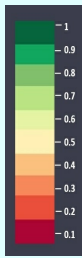


Irrigation inspection is required in north, north east, east, south, south east directions of your field

Probable causes for bad irrigation:

- Low Water Quantity in Plants
- Low Soil Moisture
- High Evapotranspiration Rate

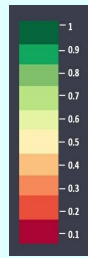
DEM (For Flood Analysis)



DEM image tells probable flooding areas due to being at lower terrain.

Your farm is uniformly level/flat

SOC (For Soil Carbon Analysis)



SOC image provides a map of soil organic matter, present at the field.

Soil organic carbon is looking good in your field

Weather Statistics for imagery capture data

Weather Station:

not available



Average Cloud Cover:

not available %



Minimum Temperature:

not available deg C



Average Wind Speed:

not available m/s



Average Humidity:

not available %



Maximum Temperature:

not available deg C



Wind Direction:

not available deg



Average Pressure:

not available hPa

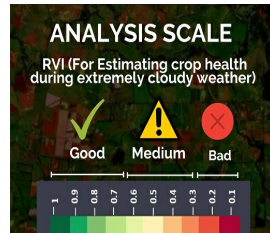
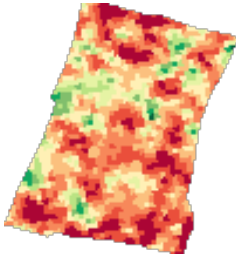
Weather Forecast (Next 7 days)

Date	Summary	Minimum Temperature (deg C)	Maximum Temperature (deg C)	Rain Probability (%)	Max Precipitation (mm per hr)	Cloud Cover (%)
2025-03-10	Sunny	9.8	10.4	0	0.0	22
2025-03-11	Sunny	9.9	11.4	0	0.0	13
2025-03-12	Sunny	10.1	11.5	0	0.0	2
2025-03-13	Sunny	10.0	11.1	0	0.0	0
2025-03-14	Sunny	9.9	10.9	0	0.0	0
2025-03-15	Sunny	10.5	12.0	0	0.0	28
NA	NA	NA	NA	NA	NA	NA



**This Data Will
Be Available
From Next
Report**

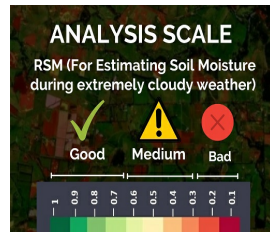
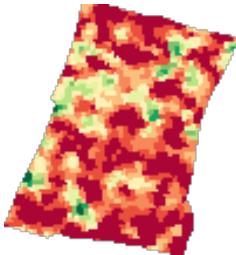
RVI (Radar Vegetation Index)



Scientific Background

Radar Vegetation Index generally ranges between 0 and 1 and is a measure of the randomness of the scattering. RVI is near zero for a smooth bare surface and increases as a crop grows (up to a point in the growth cycle). Use this index for crop health estimation during cloudy weather.

RSM (Radar Soil Moisture)



Scientific Background

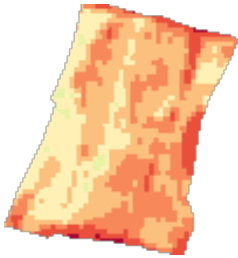
soil moisture measures status of plant health based on how plants reflect light at certain frequencies. Though we cannot perceive it with our eyes, everything around us (including plants) reflects wavelengths of light in visible and non-visible spectrum. Taking into account of certain wavelength is reflected, we can assess the current status of plants. If a plant is healthy, it will have large amount of chlorophyll on its leaves and will absorb good amount of visible light from 0.4 to 0.7 microns and reflect quite less of it and vice-versa, we take into account this basic principle in identifying crop health status of agricultural land.

Crop Health (NDVI, EVI, SAVI, NDRE)

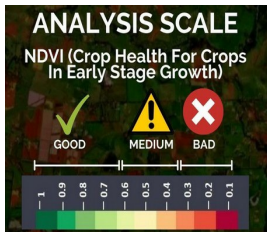
NDVI (Normalized Difference Vegetation Index)

NDVI image provides you a colour map of the vegetation of your farming field and nearby areas. The areas shown in red are the regions where the crop growth may not be normal. You should refer to these images when your crop is in early stage of growth.

Use When vegetation is of good height



Use When vegetation is of small height



Field Area in Different Health Zones	
Dark Green	NDVI: 0.9 to 1.0 -> 0 sq. m.
Green	NDVI: 0.8 to 0.9 -> 0 sq. m.
Light Green	NDVI: 0.7 to 0.8 -> 0 sq. m.
Yellow-Green	NDVI: 0.6 to 0.7 -> 0 sq. m.
Yellow	NDVI: 0.5 to 0.6 -> 2726 sq. m.
Light Yellow	NDVI: 0.4 to 0.5 -> 28967 sq. m.
Orange	NDVI: 0.3 to 0.4 -> 50153 sq. m.
Red-Orange	NDVI: 0.2 to 0.3 -> 34268 sq. m.
Red	NDVI: 0.1 to 0.2 -> 10413 sq. m.
Dark Red	NDVI: -1 to 0.1 -> 341 sq. m.



**This Data Will
Be Available
From Next
Report**

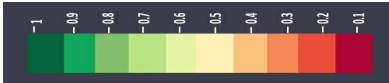
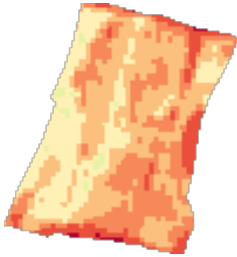
Scientific Background

NDVI measures status of plant health based on how plants reflect light at certain frequencies. Though we cannot perceive it with our eyes, everything around us (including plants) reflects wavelengths of light in visible and non-visible spectrum. Taking into account of certain wavelength is reflected, we can assess the current status of plants. If a plant is healthy, it will have large amount of chlorophyll on its leaves and will absorb good amount of visible light from 0.4 to 0.7 microns and reflect quite less of it and vice-versa, we take into account this basic principle in identifying crop health status of agricultural land.

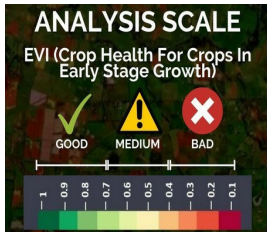
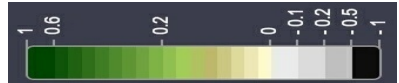
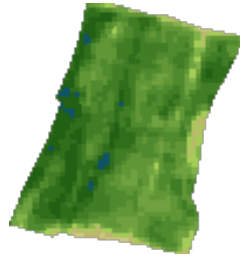
EVI (Enhanced Vegetation Index)

EVI image provides you a colour map of the vegetation of your farming field and nearby areas. The areas shown in red are the regions where the crop growth may not be normal. You should refer to these images when your crop is in later stage of growth and your crop canopy is dense.

Use When vegetation is of good height



Use When vegetation is of small height



Field Area in Different Health Zones	
Dark Green	EVI: 0.9 to 1.0 -> 0 sq. m.
Green	EVI: 0.8 to 0.9 -> 0 sq. m.
Light Green	EVI: 0.7 to 0.8 -> 0 sq. m.
Yellow-Green	EVI: 0.6 to 0.7 -> 0 sq. m.
Yellow	EVI: 0.5 to 0.6 -> 2726 sq. m.
Light Orange	EVI: 0.4 to 0.5 -> 28967 sq. m.
Orange	EVI: 0.3 to 0.4 -> 50153 sq. m.
Dark Orange	EVI: 0.2 to 0.3 -> 34268 sq. m.
Red-Orange	EVI: 0.1 to 0.2 -> 10413 sq. m.
Dark Red	EVI: -1 to 0.1 -> 341 sq. m.


**This Data Will
 Be Available
 From Next
 Report**

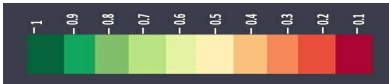
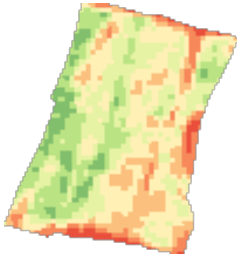
Scientific Background

The Enhanced Vegetation Index (EVI) uses additional wavelengths of light to correct for the inaccuracies of NDVI. Variations in solar incidence angle, atmospheric conditions like distortions in the reflected light caused by the particles in the air, and signals from the ground cover below the vegetation are corrected for using EVI.

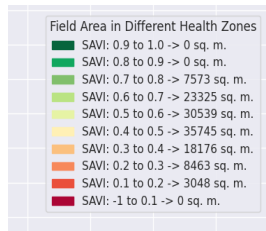
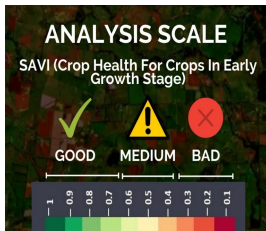
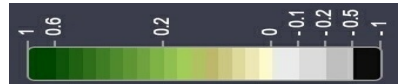
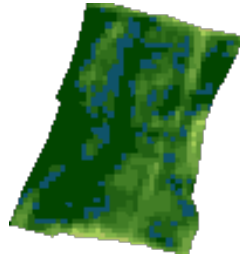
SAVI (Soil Adjusted Vegetation Index)

SAVI image provides you a colour map of the vegetation of your farming field and nearby areas. The areas shown in red are the regions where the crop growth may not be normal. You should refer to these images when your crop is in the later stage of growth and your crop canopy is dense.

Use When vegetation is of good height



Use When vegetation is of small height



This Data Will Be Available From Next Report

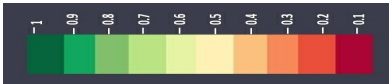
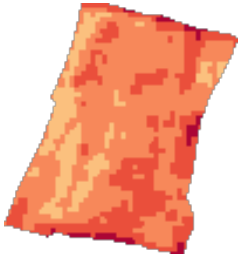
Scientific Background

The soil-adjusted vegetation index was developed as a modification of the Normalized Difference Vegetation Index to correct for the influence of soil brightness when vegetative cover is low. The SAVI is structured similar to the NDVI but with the addition of a "soil brightness correction factor".

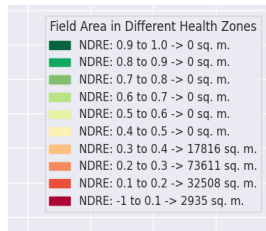
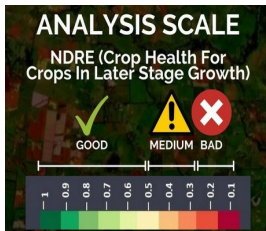
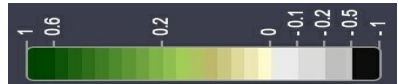
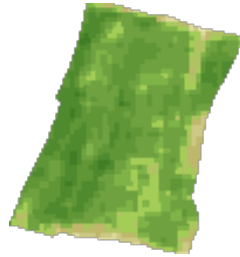
NDRE (Normalized Difference Red Edge Image)

NDRE image provides you a colour map of the vegetation of your farming field and nearby areas. The areas shown in red are the regions where the crop growth may not be normal. You should refer to these images when your crop is in the later stage of growth.

Use When vegetation is of good height



Use When vegetation is of small height



**This Data Will
Be Available
From Next
Report**

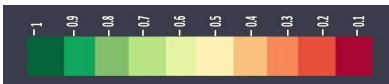
Scientific Background

NDRE uses combination of near infrared light and a frequency band that is in the transition region between visual red and NIR light. The red edge band of NDRE provides a measurement that is not strongly absorbed by just the topmost layers of leaves. By using NDRE, one can get better insight into crops in their later stage because it is able to observe further down into the canopy a well. NDRE is also less prone to saturation in the presence of dense vegetation. This will help us get much accurate results in pasture biomass estimation measurements. Thus, in situation like these, NDRE can provide a much accurate and better measurement of variability in an area in which the NDVI measurement would come simply as 1.0.

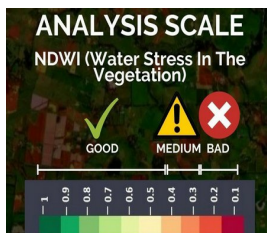
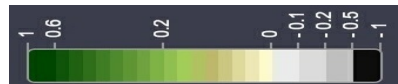
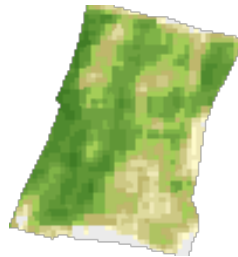
NDWI (Normalized Difference Water Index)

NDWI image provides you a colour map of the vegetation of your farming field and nearby areas. It provides information about the presence of water in the plants. The areas shown in red are the regions where the water level may not be normal. In case of drought or less rainfall, these areas will be the most affected.

Use When vegetation is of good height



Use When vegetation is of small height



Field Area in Different Health Zones	
Dark Green	NDWI: 0.9 to 1.0 -> 0 sq. m.
Green	NDWI: 0.8 to 0.9 -> 0 sq. m.
Light Green	NDWI: 0.7 to 0.8 -> 0 sq. m.
Yellow-Green	NDWI: 0.6 to 0.7 -> 0 sq. m.
Yellow	NDWI: 0.5 to 0.6 -> 0 sq. m.
Light Yellow	NDWI: 0.4 to 0.5 -> 19 sq. m.
Orange	NDWI: 0.3 to 0.4 -> 13026 sq. m.
Red-Orange	NDWI: 0.2 to 0.3 -> 38036 sq. m.
Red	NDWI: 0.1 to 0.2 -> 47919 sq. m.
Dark Red	NDWI: -1 to 0.1 -> 27869 sq. m.


This Data Will Be Available From Next Report

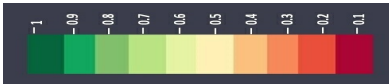
Scientific Background

Vegetation cover on the earth surface undergoes severe stress in plants during a drought. If affected areas are not identified in time, entire crops may be damaged. Hence, the early detection of water quantity in plants can prevent many of the negative impacts on crops. NDWI can help us control irrigation and significantly improve agriculture, especially in areas where meeting the need for water is difficult.

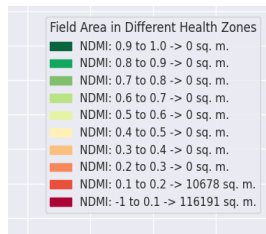
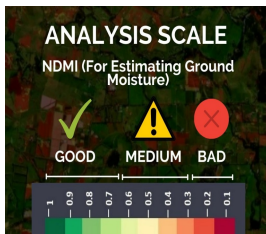
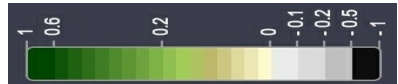
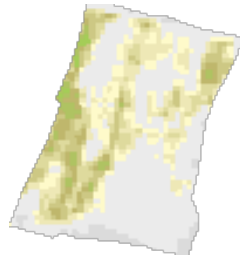
NDMI (Normalized Difference Moisture Index)

Vegetation cover on the earth surface undergoes severe stress in plants during a drought. It provides information about presence of moisture in the soil. If affected areas are not identified in time, entire crops may be damaged. Hence, the early detection of water quantity in plants can prevent many of the negative impacts on crops. NDMI can help us control irrigation and significantly improve agriculture, especially in areas where meeting the need for water is difficult.

Use When vegetation is of good height



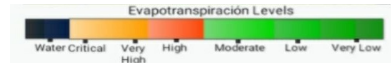
Use When vegetation is of small height



**This Data Will
Be Available
From Next
Report**

Scientific Background

The NDMI is a normalized difference moisture index, that uses NIR and SWIR bands to display moisture. The SWIR band reflects changes in both the vegetation water content and the spongy mesophyll structure in vegetation canopies, while the NIR reflectance is affected by leaf internal structure and leaf dry matter content but not by water content. The combination of the NIR with the SWIR removes variations induced by leaf internal structure and leaf dry matter content, improving the accuracy in retrieving the vegetation water content.



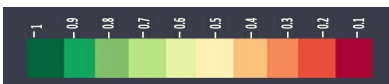
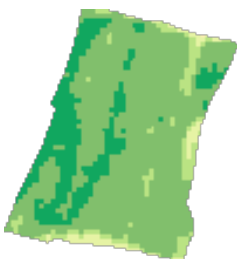
Identifies Location where water is getting into the Atmosphere at a High rate

Evapotranspiration is the loss of water from the soil surface as well as from the plants. It measures the rate at which evaporation and transpiration occurs at multiple locations on the farm. Through evapotranspiration one can easily schedule the irrigation based on the indicators received by the data. Nevertheless, it can be ignored if NDWI and NDMI data result in a good condition.

Soil Health (SOC)

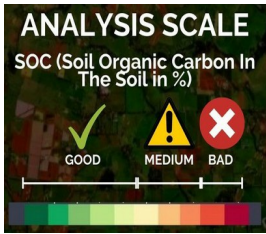
SOC image provides you a colour map of percentage of organic matter present at your selected field. Organic matter contributes to nutrient retention and turnover, soil structure, moisture retention and availability degradation of pollutants, carbon sequestration and soil resilience. The areas shown in red are the regions where the soil organic carbon is less than 1%.

Use When vegetation is of good height



Use When vegetation is of small height





Field Area with Different SOC%

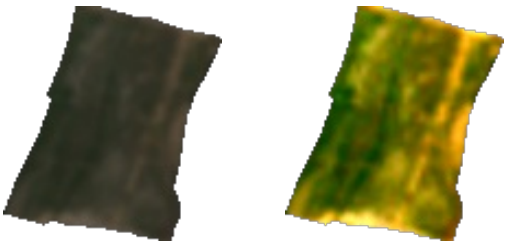
Dark Green	SOC: more than 0.25% -> 0 sq. m.
Green	SOC: 0.2% to 0.25% -> 25351 sq. m.
Light Green	SOC: 0.15% to 0.2% -> 88284 sq. m.
Yellow-Green	SOC: 0.137% to 0.15% -> 9353 sq. m.
Yellow	SOC: 0.125% to 0.137% -> 3843 sq. m.
Light Yellow	SOC: 0.112% to 0.125% -> 38 sq. m.
Orange	SOC: 0.1% to 0.112% -> 0 sq. m.
Red-Orange	SOC: 0.075% to 0.1% -> 0 sq. m.
Red	SOC: 0.05% to 0.075% -> 0 sq. m.
Dark Red	SOC: less than 0.05% -> 0 sq. m.



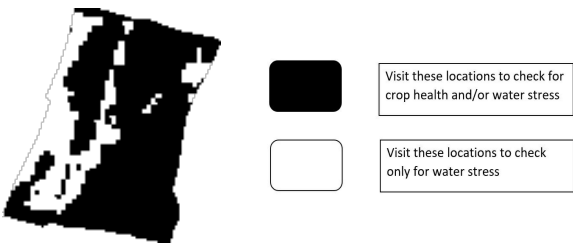
This Data Will Be Available From Next Report

RGB Image

True color image is the unaltered raw satellite image retrieved for your area, whereas Enhanced true color image is the processed satellite image of your area with enhanced land features. Using these two images you can see any observable land changes around your field which may be crucial for your farming practices.



Basic Analysis for Colourblind Visualization (Crop Health + Irrigation)



KEEP MONITORING FARMS